

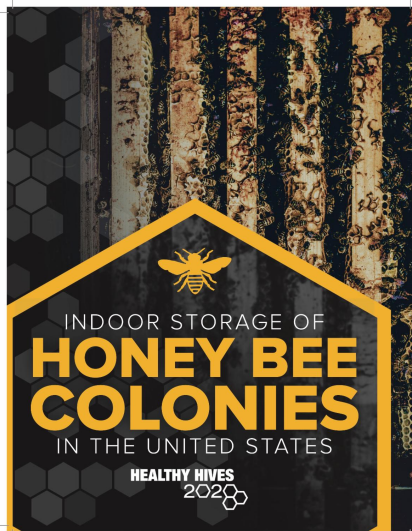
Project *Apis m.*

BUZZWORD

WINTER 2020



Project *Apis m.*

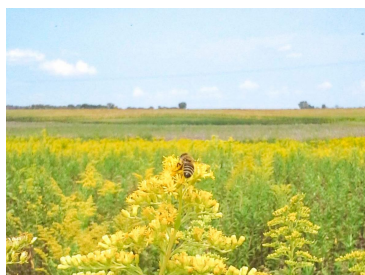


LAB TO LANDSCAPE

New Guide for Indoor Storage of Honey Bee Colonies in the United States!

Beekeepers asked and we delivered: This Guide to the Indoor Storage of Honey Bee Colonies in the United States was developed and created by Dr. Brandon Hopkins as a part of the Healthy Hives 2020 Initiative to provide an overview of best practices and scientific information for beekeepers who store their colonies indoors or want to learn more about this management option. Hard copies were offered at January AHPA and ABF meetings, and you can download a copy from our website.

[READ MORE AND DOWNLOAD HERE](#)



PAm MAKES IT POSSIBLE

Blue Diamond Growers and PAm Partner to Support Pollination and Honey Bees

"PAm makes it possible" but our donors and partners are the real heroes of the story!

[READ MORE](#)

PAm COSTCO SCHOLAR SPOTLIGHT

Morgan Carr Markell: Applying Foraging Behavior

The PAm-Costco Scholar Fellowship has helped Morgan take her interest in honey bee foraging behavior and apply it to helping beekeepers and land managers who want to support honey bees.

[READ MORE](#)

ON THE LANDSCAPE

Seeds for Bees Pilots Planting for Western Monarchs

The Healthy Hives2020 symposium at the American Beekeeping Federation annual meeting highlighted 4 years of work to find honey bee health solutions.

[READ MORE](#)

[DONATE NOW](#)

Together we can "move the needle in the right direction for honey bees"

PAm was founded by beekeepers and growers for beekeepers, growers and honey bees.

Your support is an investment in practical, innovative research and habitat projects that directly support honey bee health, beekeeper tools, and industry collaboration.

Help us fill the Honey Jar!



Wisdom from the Hive Mind

Do you have a comment or suggestion that you'd like to share related to honey bee health, our research or forage programs, or a burning question you've always wanted to ask a beekeeper or researcher? What topics are you most interested in? Follow the link [here](#).



Project Apis m.

Dedicated to enhancing honey bee health and crop production.

[Research](#) | [Forage](#) | [Resources](#)

916-287-3035 | sharah@projectapism.org | ProjectApism.org | BeeAndButterflyFund.org

STAY CONNECTED



Copyright © 2018 Project Apis m. All rights reserved.

You're receiving this because you are a valued supporter of Project Apis m.