

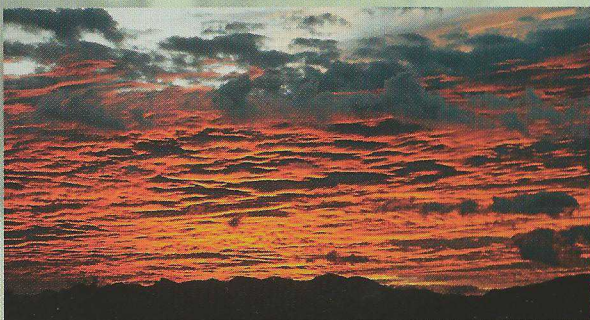
Agricultural Sprays

Products

- * Let your beekeeper know the agricultural sprays used for crop protection, including tank mixes.

Application and Timing

- * Honey bees come in contact with agricultural sprays in different ways:
 - Bees may fly through the spray
 - Sprays may drift to hives via wind
 - Bees may collect and bring into the hive pollen that contains chemical residue
- * Management practices to minimize contact are:
 - Spray when honey bees are not flying
 - Spray when pollen is not being produced by the tree
 - Time applications late in the afternoon or at night.



Pollination Contracts

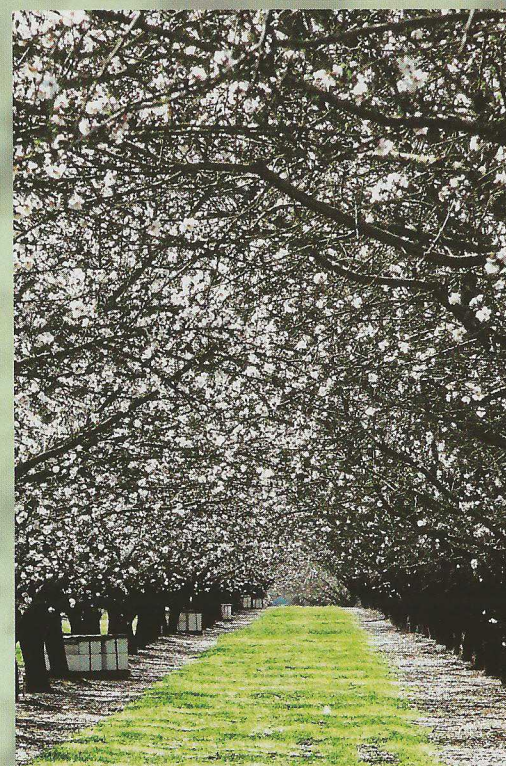
- * A signed contract protects both grower and beekeeper.
- * Visit www.ProjectApism.org/ Downloads for a pollination contract template.



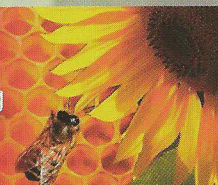
- * Secure contracts early for the following pollination season so beekeepers will make the investment in colony health and strength.
- * When colonies arrive in the orchard, check colony strength.
 - 8 to 10 frames is optimum
- * An objective third party inspection of colonies will indicate if contractual obligations have been met.
- * Allow your beekeeper time and opportunity to provide additional colonies if needed.
- * Walk your orchard during honey bee flight hours to make sure you see plenty of bee activity.

Project Apis m.

Best Management Practices For Almond Growers



www.ProjectApism.org



Honey Bee Nutrition

Forage

- * If possible, help your beekeeper locate flowering forage prior to and after almond bloom to offset dearth.
 - On adjacent acreage
 - At perimeter of orchard
 - Within younger orchards
 - On fallow land
- * Good examples of alternative food resources are mustard, clover or vetch.



Water

- * Water is important to prevent dehydration.
- * Provide abundant and potable water, free from contamination.
- * Landings and screens make water accessible and prevent bee drownings.



Hive Placement

Location

- * The distribution of colonies should be accessible and convenient at all hours.
 - Beekeepers need to place, service and remove hives routinely.
- * Orchard roads should be maintained and graded for easy access.
- * Allow for hive placement in areas not prone to flooding or shade.
- * Eastern and southern exposures are better for sun and warmer temperatures and encourage bee flight for pollination.
- * Let bees do their job, place hives as to limit human and honey bee interaction.



How Can You Help?

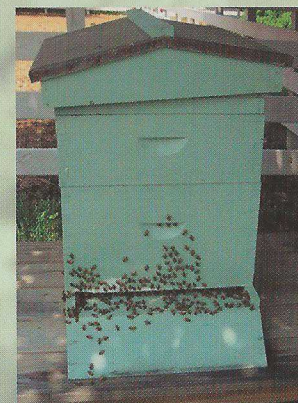
I am supporting the work of Project Apis m. (PAm) in its commitment to honey bee health and research in the amount of \$ _____.

Mail your donation to:

Project Apis m.

6775 Chardonnay Road
Paso Robles, CA 93446

www.ProjectApism.org



**Thank you for
your support!**

Project Apis m. is a 501 (c) (5) non-profit organization