



## Project Apis m.



### Project Apis m. 2021 Annual Report

We are pleased to present you with our 2021 Annual Report. Here you will find an overview of PAM's latest research, resources, and forage projects along with financial information from the past fiscal year.

We hope you enjoy it, learn something new about P Am, and we welcome any comments or feedback.

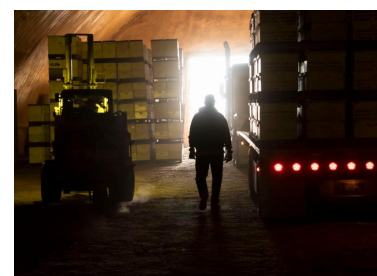
[READ MORE](#)



NEW\* Guide to



Project Apis m.



Indoor Storage

## Shipping Honey Bee Queen Cells

A brand new, free resource for the beekeeping industry!

"Greater access to queen cells could promote a more profitable and sustainable beekeeping industry by increasing accessibility to queen cells and bolstering queen producers' income streams."

[READ MORE](#)

## Welcomes New Habitat Program Director, Rory Crowley

Starting in January, Rory will be managing the Seeds for Bees program in California and working with the Bee and Butterfly Habitat Fund to grow and develop PAm's habitat programs. We are looking forward to the addition of Rory's unique experiences which bring new perspective along with well-worn "boots-on-the-ground" to our efforts.

[READ MORE](#)

## Conference Recording

In November, 2021, Project *Apis m.*, the Almond Board of California, and Washington State University hosted a 2-day virtual Indoor Storage of Honey Bees Conference. If you missed it, don't worry! We have the full conference available for viewing online.

[WATCH VIDEO](#)

---

[DONATE NOW](#)

Together we can "move the needle in the right direction for honey bees"

PAm was founded by beekeepers and growers for beekeepers, growers and honey bees.

**Your support** is an investment in practical, innovative research and habitat projects that directly support honey bee health, beekeeper tools, and industry collaboration.

Help us fill the Honey Jar!



## Wisdom from the Hive Mind

Do you have a comment or suggestion that you'd like to share related to honey bee health, our research or forage programs, or a burning question you've always wanted to ask a beekeeper or researcher? What topics are you most interested in? Follow the link [here](#).

---

### Project *Apis m.*

Dedicated to enhancing honey bee health and crop production.

[Research](#) | [Forage](#) | [Resources](#)

916-287-3035 | [sharah@projectapism.org](mailto:sharah@projectapism.org) | [ProjectApism.org](http://ProjectApism.org) | [BeeAndButterflyFund.org](http://BeeAndButterflyFund.org)

STAY CONNECTED



Copyright © 2018 Project *Apis m.* All rights reserved.

You're receiving this because you are a valued supporter of Project *Apis m.*