

Project *Apis m.*

BUZZWORD

SPRING 2021



Project *Apis m.*

[Pollinator Week](#) is just around the corner, and starts on June 21st! Project *Apis m.* is using the week to highlight the "4 P's" that represent the challenges pollinators face: parasites, pathogens, pesticides, and poor nutrition, and how we rise to the challenge through research and partnership. Join us on [Facebook](#) or [Instagram](#) to follow along!

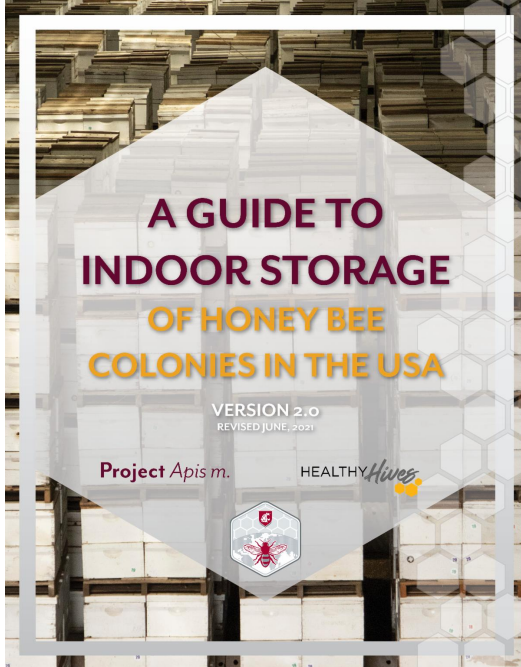


RESOURCES FOR BEEKEEPERS

NEW Guide to Indoor Storage of Honey Bee Colonies in the USA, Version 2.0!

At Project Apis m., we are continuing our legacy of investing in practical resources and BMPs for beekeepers!

We are happy to announce the release of the new Indoor Storage Guide for Honey Bees in the USA, Version 2.0, in partnership with Washington State



University and Healthy Hives. This interactive online and print resource contains three brand new chapters on *Varroa* control, overwintering for backyard beekeepers, and demographics, and is designed to be continuously updated with the best and newest information available about storing bees indoors.

Visit the [ONLINE RESOURCE](#) to see what's new, and to download the .pdf of the Indoor Storage Guide V 2.0

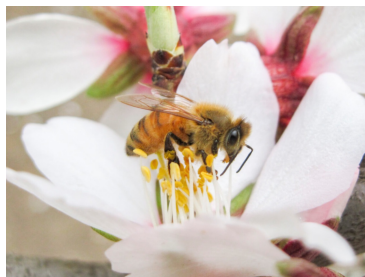


ON THE LANDSCAPE

Water for Bees

Water for Bees is a program in partnership with Blue Diamond Growers that provides clean drinking water for bees during the almond bloom. Watch the video to learn how to make your own watering station for the bees and beneficial insects in your own backyard.

[WATCH THE VIDEO](#)



PAm PARTNERS

Flagstone Foods

We are excited to announce Project Apis m.'s newest Cause Marketing partner, Flagstone Foods! Flagstone Foods is on a mission to source 100 percent of its almonds from bee-friendly farms by 2025, good news for bees, and good news for almond lovers.

[READ MORE](#)



FORAGE CORNER

Seeds for Bees Enrollment is Open for the 2021-2022 Growing Season

Farmers and Growers in California are encouraged to apply for free or discounted cover crop and forage seed to help support the nutritional needs of honey bees and native pollinators.

[READ MORE](#)

[APPLY TO ENROLL](#)

[DONATE NOW](#)

Together we can "move the needle in the right direction for honey bees"

PAm was founded by beekeepers and growers for beekeepers, growers and honey bees. **Your support** is an investment in practical, innovative research and habitat projects that directly support honey bee health, beekeeper tools, and industry collaboration.

Wisdom from the Hive Mind



Do you have a comment or suggestion that you'd like to share related to honey bee health, our research or forage programs, or a burning question you've always wanted to ask a beekeeper or researcher? What topics are you most interested in? Follow the link [here](#).

Project Apis m.

Dedicated to enhancing honey bee health and crop production.

[Research](#) | [Forage](#) | [Resources](#)

916-287-3035 | sharah@projectapism.org | ProjectApism.org | BeeAndButterflyFund.org

STAY CONNECTED



Copyright © 2018 Project Apis m. All rights reserved.

You're receiving this because you are a valued supporter of Project Apis m.