

Project *Apis m.*

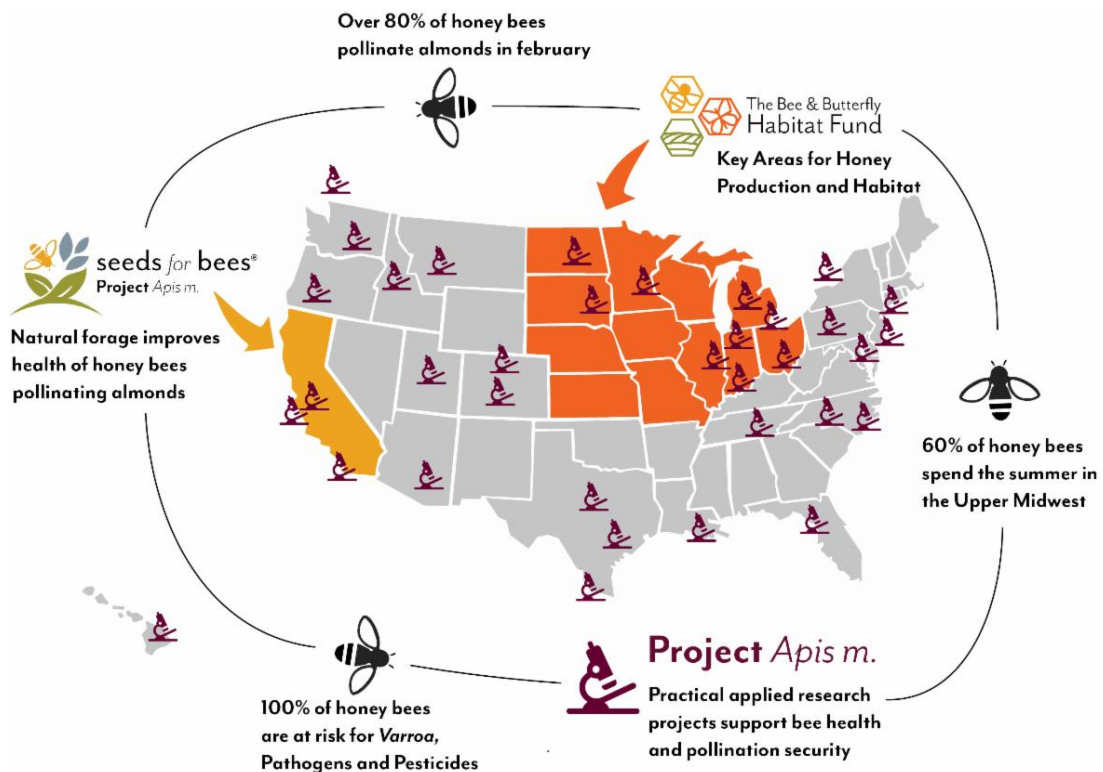
# BUZZWORD

WINTER 2021



## Project *Apis m.*

As the almond bloom is winding down, over 80% of the Commercial Honey Bees in the US are currently in California. Our Seeds for Bees program worked with California growers this year to plant over 12,000 acres of blooming cover crops to support bee health before, during, and after the bloom. Almonds are big news, but they are still just one stop in the journey of a commercial honey bee colony. Supporting honey bee health and sustainable beekeeping is a year-round task requiring many resources.



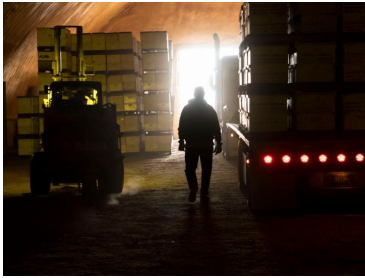


LAB TO LANDSCAPE

## Judy Wu-Smart Investigates Impacts of Pesticide Treated Seed Recycling

Well before the public became aware of an [ethanol plant](#) producing pesticide-laden by-products, there had already been a concerning trend of beekeepers leaving Nebraska...

[READ MORE](#)



POLLINATION MIGRATION

### Transporting Honey Bees for Pollination

It takes tremendous effort to move honey bees from over 40 states into the almond orchards for pollination. We made an educational mini-documentary following over 800 colonies from indoor storage in Idaho to orchards in California's Central Valley.

[WATCH VIDEO](#)



QUEENS & USPS

### Shipping Queens During a Pandemic

With package bee season right around the corner, and spring queen orders kicking into high gear, how is a strained USPS impacting queen and package producers?

[READ MORE](#)



PAm MAKES IT POSSIBLE

### Hilo Bees - 4 years of North Dakota Data

Hilo Bees are the product of a public-private partnership working to create a commercially viable biologically *Varroa* resistant honey bee.

[READ THE REPORT](#)

and

VISIT: [www.HiloBees.com](http://www.HiloBees.com)

[DONATE NOW](#)

Together we can "move the needle in the right direction for honey bees"

PAm was founded by beekeepers and growers for beekeepers, growers and honey bees. **Your support** is an investment in practical, innovative research and habitat projects that directly support honey bee health, beekeeper tools, and industry collaboration.



### Wisdom from the Hive Mind

Do you have a comment or suggestion that you'd like to share related to honey bee health, our research or forage programs, or a burning question you've always wanted to ask a beekeeper or researcher? What topics are you most interested in? Follow the link [here](#).

Project *Apis m.*

Dedicated to enhancing honey bee health and crop production.

STAY CONNECTED



Copyright © 2018 Project Apis m. All rights reserved.  
You're receiving this because you are a valued supporter of Project Apis m.